

## Exhibitors

### General

10:10  
DSCF - Sustainable Schools  
Footprint Friends  
Fosseway Primary School  
Lincolnshire Events Centre  
RCE Sustainable Schools Working Group  
StudentForce for Sustainability  
Sustainable Schools - Lincolnshire County Council/  
School Improvement Service

### Food and Drink

Catering by The Farm Kitchen and The Healthy Hub.  
Bourne Westfield Primary School  
Expo Chef  
Farming & Countryside Education  
Feast, The Food and Farming Network  
Food for Life Partnership  
Food in Schools Team - Lincolnshire C.C.  
Healthy Schools - Healthy Packed Lunches  
Priory City of Lincoln Academy  
Rand Farm Park  
Working Gardens CIC

### Building and Grounds

Acer Landscapes Design and Construction Ltd  
Balfour Beatty  
Environmental Management Team - Lincs C.C.  
Inspiring Outdoors  
Inspirational Gardens  
Mouchel  
Natural Inspirations/Learning through Landscapes  
Newby Leisure Ltd  
Osbourne Primary School  
pH studios  
Sardeson Sculptures  
The Gelder Group

### Travel and Traffic

Batribike (Fallowgate Ltd)  
Sustrans Bike It  
BrightKidz  
Creative Problem Solvers  
Cyclemagic  
Cyclepods Ltd  
External Solutions Limited  
Lincolnshire Road Safety Partnership  
School Travel Plan Team - Lincolnshire C.C.  
The Deepings School  
The Meadows Primary School  
Transport Services - Max Respect

### Inclusion and Participation

Carers Federation Ltd  
Children and Young People's Strategic Partnership  
Gainsborough Traveller Initiative/Education Services  
Helpingham Primary School  
Lincolnshire Healthy Schools  
Lincolnshire Police - community safety  
Participation Team - Lincolnshire C.C.  
Participation Works  
Targeted Mental Health  
William Farr C of E Comprehensive School

### Energy and Water

4solar Ltd  
Cordeaux School  
Energy Saving Trust  
Freewatt Renewable Energy  
LowC Communities Ltd  
Powerstar  
powerPerfector  
Sitec Infrastructure Ltd - wind turbines  
Solar-Active/Schools & Homes Energy Ed. Project  
Stourton Forestry  
Waterscan Ltd

### Purchasing and Waste

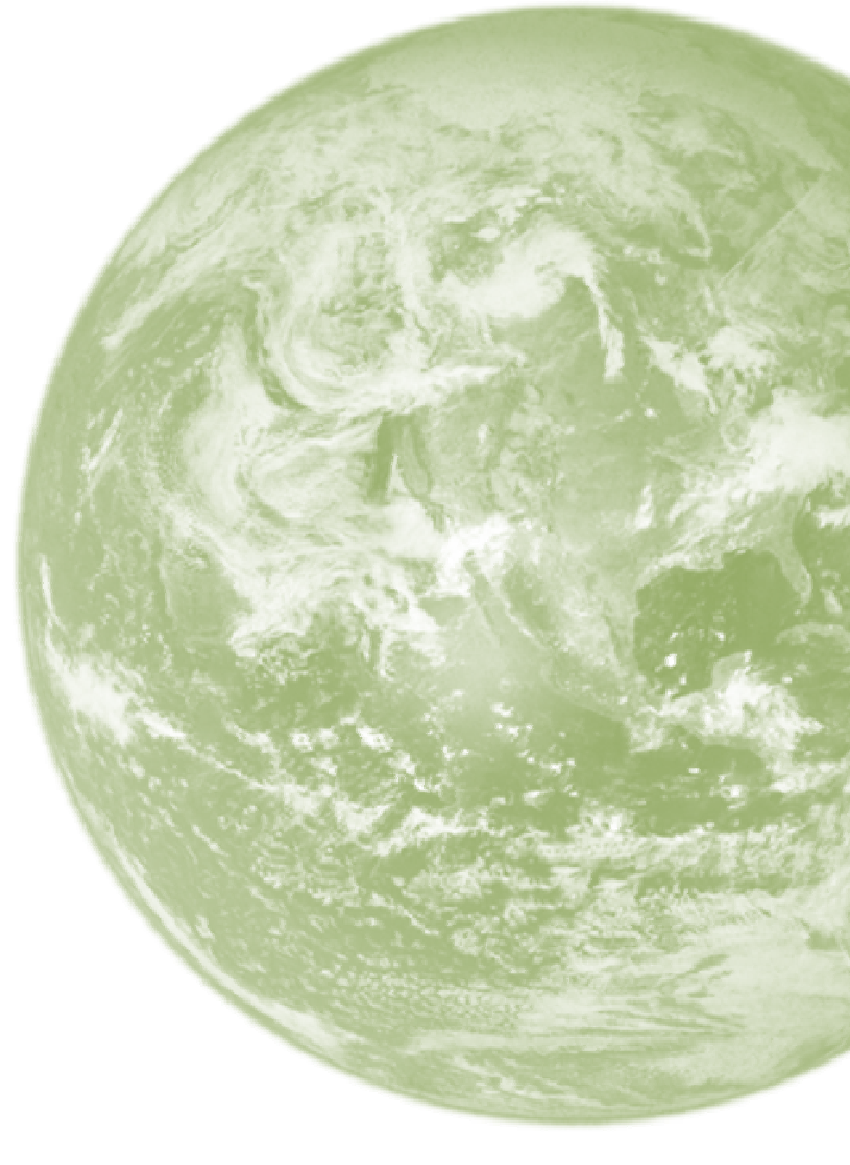
CfBT Arts and Study Support  
ESPO - sustainable products  
Hats on Heads  
City of Lincoln Council  
Lincoln Christ's Hospital School  
Lincolnshire County Council  
Pulp-Works  
Ragtex UK Ltd  
Resike - Teachshare  
South Holland District Council  
Tidy Planet Ltd  
Trading standards team - Pack it in  
Urban Recycling  
West Lindsey District Council

### Local Well-being

Countryside Access Team  
Forest Schools - Copthill Nursery and Day School  
Freiston Centre for Environmental Education  
Lincolnshire Wildlife Trust - education centres  
Lincolnshire Wolds Countryside Service  
CfBT Talent Lincolnshire  
Museum, Libraries and Archives - Lincolnshire.C.C.  
National Trust  
Outdoor Education Adviser - Lincs C.C./CfBT  
Groundwork Lincolnshire  
St Francis Special School  
Wash Estuary Strategy Group  
Welbourn C of E Primary School

### Global Dimension

British Council  
CfBT - Modern Foreign Languages  
CfBT - PSHE and artefact loan boxes  
EM Network for global perspectives in Schools  
Education for all  
EMAS  
ESWOTS/F1 Group  
Fairtrade Foundation  
Geographical Association  
John Spendluffe Foundation Technology College  
Oxfam (GB Youth & Schools Team)  
Monk's Abbey Primary School  
School Aid Network  
Send a cow  
The Indian Experience



# East Midlands Sustainable Schools Showcase 2010

Wednesday 3<sup>rd</sup> March 2010 9am - 4pm  
The EPIC Centre, Lincolnshire Showground, LN2 2NA



Find out more and book at [www.lincolnshire.gov.uk/sss](http://www.lincolnshire.gov.uk/sss)

A day for changing minds, sharing practical solutions and working together to make a difference.

## Aim of the SSS

The showcase aims to raise awareness of the DCSF's Framework for Sustainable Schools and to bring together organisations that can give practical solutions to achieve it.

The showcase has three main elements:

- Exhibitors from over 100 organisations
- For adults - talks from national speakers on all the 'doorways' of sustainable schools
- For school councils/eco-committees - talks, workshops and performances

The showcase is about gaining information in an inspirational and fun way whilst motivating schools to become a sustainable school.

## Who should attend?

The showcase is free, and open to students representing their school council or eco-committee, and anyone else who supports schools to become more sustainable:

- Primary, secondary and special headteachers and teachers
- Governors
- School business managers/bursars
- Caretakers and site managers
- Extended schools co-ordinators
- Managers of early years settings
- Council officers and other organisations associated with any of the eight doorways

## Key features of the day

The exhibition is open from 9am - 4pm and is set out in the eight 'doorways' of Sustainable Schools:

- Food and Drink
- Energy and Water
- Purchasing and Waste
- Travel and Traffic
- Buildings and Grounds
- Inclusion and Participation
- Local Well-being
- Global Dimension

Staff and governors should be interested in talks from Janice Lawson of the DCSF, and Leszek Iwaskow from Ofsted speaking on how sustainable schools can help achieve sustainable communities; QCDA outlining the new primary curriculum; 10:10 looking at ways to cut energy demand in your school; Learning through Landscapes describing a whole approach to grounds development, and many more.

Students should be interested in activities on the main stage including: a 14 year old International Climate Champion, UNICEF's youth advisor, feet painting with Footprint Friends, Bollywood dancing, mountain bike stunt shows, music workshops, Forest Schools activities, and workshops happening in all the 'eight doorways'.

## Carbon Positive Event

SSS 2010 is a Beyond Carbon Neutral event. Attendees' travel to the event will be offset by 200%.



## Talks for Adults

9.30-10.30	A whole school approach to sustainability - A head's view  Kate Nash, Head of Silverhill Primary School and NCSL Network Leader	Learning Outside the Classroom  Ken Round, Lincs CC/CfBT Outdoor Education Adviser and Cusworth Education Services	Transforming Food Culture in Schools and Communities  Kate Shaw, EM Regional Coordinator for the Soil Association's Food for Life Partnership
10.45 - 11.45	From Curriculum To Classroom...  Steven Horsley, QCDA Primary Curriculum Network Adviser	10:10 - a smart way to cut energy demand in your school  Tracey Todhunter, Strategy Advisor for 10:10	Bringing Global Dimension to Life in the Classroom  Rohini Corfield, East Midlands Network for Global Perspectives in Schools
12.00 - 1.00	Achieving sustainable communities through sustainable schools Janice Lawson, Head of Sustainable Development Unit, DCSF Improving schools; improving life Leszek Iwaskow, HMI National Adviser for Geography/ESD, Ofsted		
1.15 - 2.15	Reducing your school's carbon footprint  Lincolnshire C.C. Sustainability and Climate Change Team/ specialist providers	Developing Effective School Councils  Participation/Healthy Schools Teams/William Farr Comprehensive School	Embedding Education for Sustainable Development in the Primary Curriculum Ingham Primary School & Sutterton Swineshead Federation
2.30 - 3.30	Sustainable Buildings - Fact or Fiction? Lincolnshire C.C. Sustainability and Climate Change Team/ Low C Communities Ltd	What is Fairtrade?  Fairtrade Foundation - a view from a pineapple producer from Ghana	Developing School Grounds - a whole school approach  Julie Fulton on behalf of Learning through Landscapes

## Activities for Students (and adults)

Main Stage		Outside	
9.45 - 10.15	Kids and climate change Eloise Bray, British Council International Climate Champion	9.15 - 9.35 11.00 - 11.20 12.00 - 12.20	Mountain Bike Stunt Team Demonstrations M.A.D. (Plus coaching)
10.30 - 11.00	Garry Swotter and the Carbon Footprint Park Community Primary School	1.00 - 1.20 2.00 - 2.20	
11.15 - 11.45	Becoming a Sustainable School – primary St. Michael's Primary School, Thorpe-on-the-Hill	10.15 - 11.15 12.30 - 1.30 Drop-in	Forest Schools Cophill Nursery and Independent Day School
11.55 - 12.25	Rethink Various schools	1.30 - 2.00 2.20 - 2.50	World music Louder than Life Ltd in partnership with Lincolnshire Music Service
12.35 - 1.05	Speak up: how youth participation can work for you  Emily Middleton, youth advisor to the UNICEF UK Board of Trustees	Other workshops throughout the exhibition include:	
1.15 - 1.45	Fairtrade Foundation A fair-trade producer from Ghana	Footprint Friends (feet painting), fashion from waste, Oxfam, Inspirational Gardens and many more.	
1.55 - 2.15	Bollywood Dancing Performance The Indian Experience		
2.25 - 2.50	Becoming a Sustainable School – secondary Cordeaux School		

